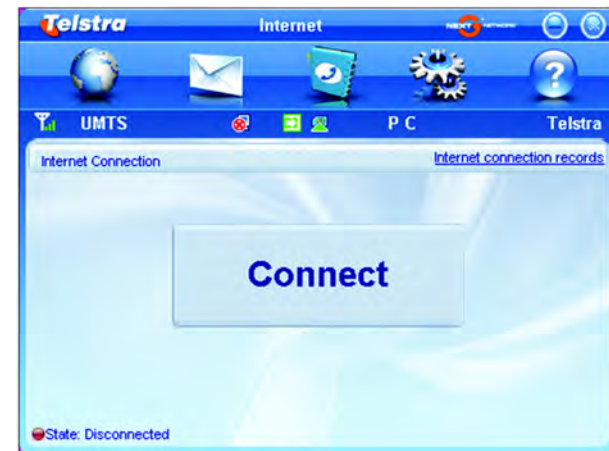


### Launching the Management Software...



The Management Software will automatically launch and the modem will continue the installation process for a few minutes.

### Network Available, Press Connect to get on line...



When the network is available press **Connect** to get on line.

### 4. Safe device removal from your computer

Whenever you need to remove the device from your computer please close the modem management software and use the Safely Remove Hardware procedure.

### 5. LED status indication

| LED Indicator  | Modem status                             |
|----------------|--|
| Red            | Offline state. Power on, not registered. |
| Green solid    | Registered on the 2G network             |
| Green blinking | Data active on the 2G network            |
| Blue solid     | Registered on the 3G network             |
| Blue blinking  | Data active on the 3G network            |

### 6. Management Software Functions

|  |          |  |
|--|----------|--|
|  | Internet | Click <b>Connect</b> to connect to the internet.   |
|  | SMS      | Click the <b>SMS</b> icon, enter recipient's number and content then click <b>Send</b> . |
|  | Contacts | Click <b>New</b> to add a new contact.   |
|  | Settings | Configuration is preset by your Service Provider there is no need to make any changes.   |
|  | Help     | Show the help information.   |

### 7. Icons

|  |                                  |  |                                 |
|--|----------------------------------|--|---------------------------------|
|  | Antenna signal strength          |  | Modem is not inserted           |
|  | SMS received                     |  | Modem is Offline                |
|  | Internet is not connected        |  | SIM card is inserted and active |
|  | Internet is connected            |  | SIM card is not inserted        |
|  | Packet switch and Circuit Switch |  | Current Network type            |
|  | Modem is inserted                |  | Current service provider        |

### 8. Troubleshooting Tips

In the event of installation or connection issues try the following suggestions:

1. **Install and test the modem in another computer**
2. **Check your SIM card is working in another device – eg mobile phone**
3. **Insert a known working SIM card into your modem**
4. **Confirm your account is active – contact your service provider**
5. **Uninstall the modem and re-install using Windows 'Safe Mode' – consult a PC technician for help if required (PC only)**

## MF633+ Turbo 7+ Modem Quick Start User Guide

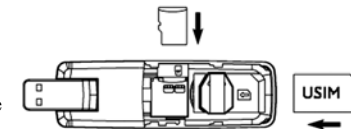


This is the quick start guide only. For full instructions please read the enclosed User Manual

## 1. Insert the USIM Card into the modem:

### 1. Insert the USIM Card into the modem:

The SIM socket is located underneath the back cover



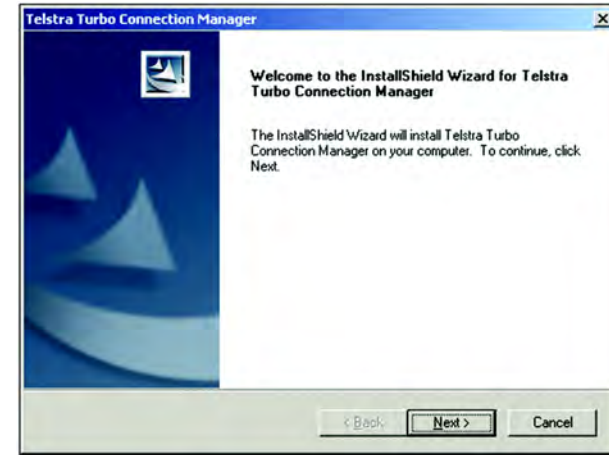
- Slide the back cover off to open
- Insert the USIM card as shown with the gold contacts facing down
- Push the USIM card in as far as it will go
- If you wish to use a MicroSD memory card please insert as shown
- Close the back cover.

### 2. Connect the USB modem to your PC:

- Plug the USB modem into your computer's USB port
- The computer will detect the new hardware and start the Install Shield Wizard
- If nothing happens your system configuration may be preventing Autorun
  - Windows users: Double-click the Autorun.exe file to start the software installation
  - MAC users: Open the CD-ROM, ZTE MODEM, and double-click Telstra Turbo Connection Manager
- Follow the prompts to complete the installation. MAC users will need to reboot.
- The card manager software will start automatically and takes a few minutes to complete

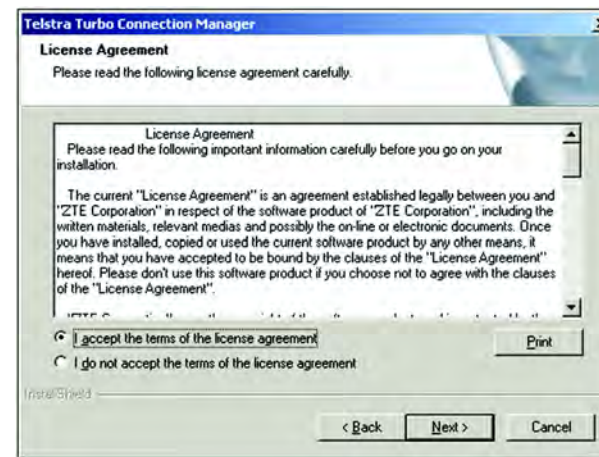
## 3. Installation Details

Screen shots are shown for Windows XP system. Other systems will follow a similar but not necessarily identical process:



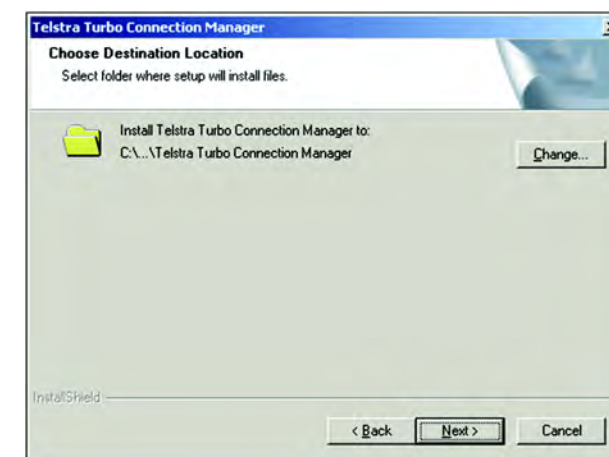
Click 'Next' to continue

## Installation continued...



Please read the terms and select 'I accept...', click 'Next' to continue

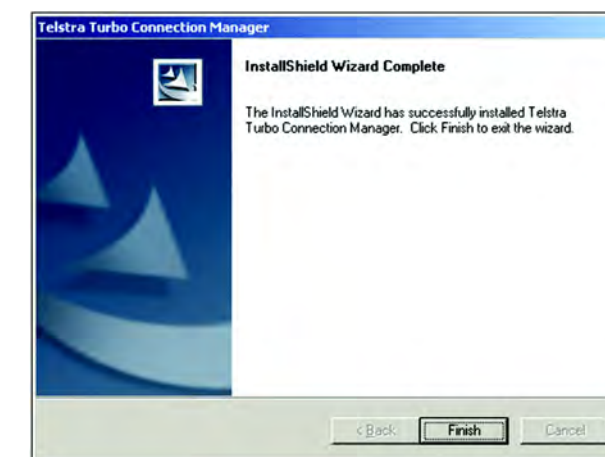
## Installation continued...



Click 'Next' to accept the default location or press 'Change' to specify your own path.

The wizard takes a few minutes to complete,

## Installation continued...



Press 'Finish' to complete.