

**Important Notes**

- The update for your T7 is the result of continuous development by ZTE and is designed to improve the performance of your device.
- When you perform the update, all your personal data such as contacts, messages, photos, audio and video files and any downloaded content will be erased.
- This software update is for the T7 ONLY and is not compatible with any other model.
- This software upgrade cannot be performed on PC's running Windows 2000 or Mac OS.
- This software tool only supports Windows XP with SP2, SP3 and Vista
- Even if the compatibility requirements mentioned in this document are fulfilled, some computers can not be used. Not all brands have been tested.
- ZTE take no responsibility for loss or damage if customers are unable to operate the software update tool, for failure of the handset or failure of the computer, loss of data or revenue.
- The Join ME software must be installed and be fully operational for the upgrade tool to function correctly.

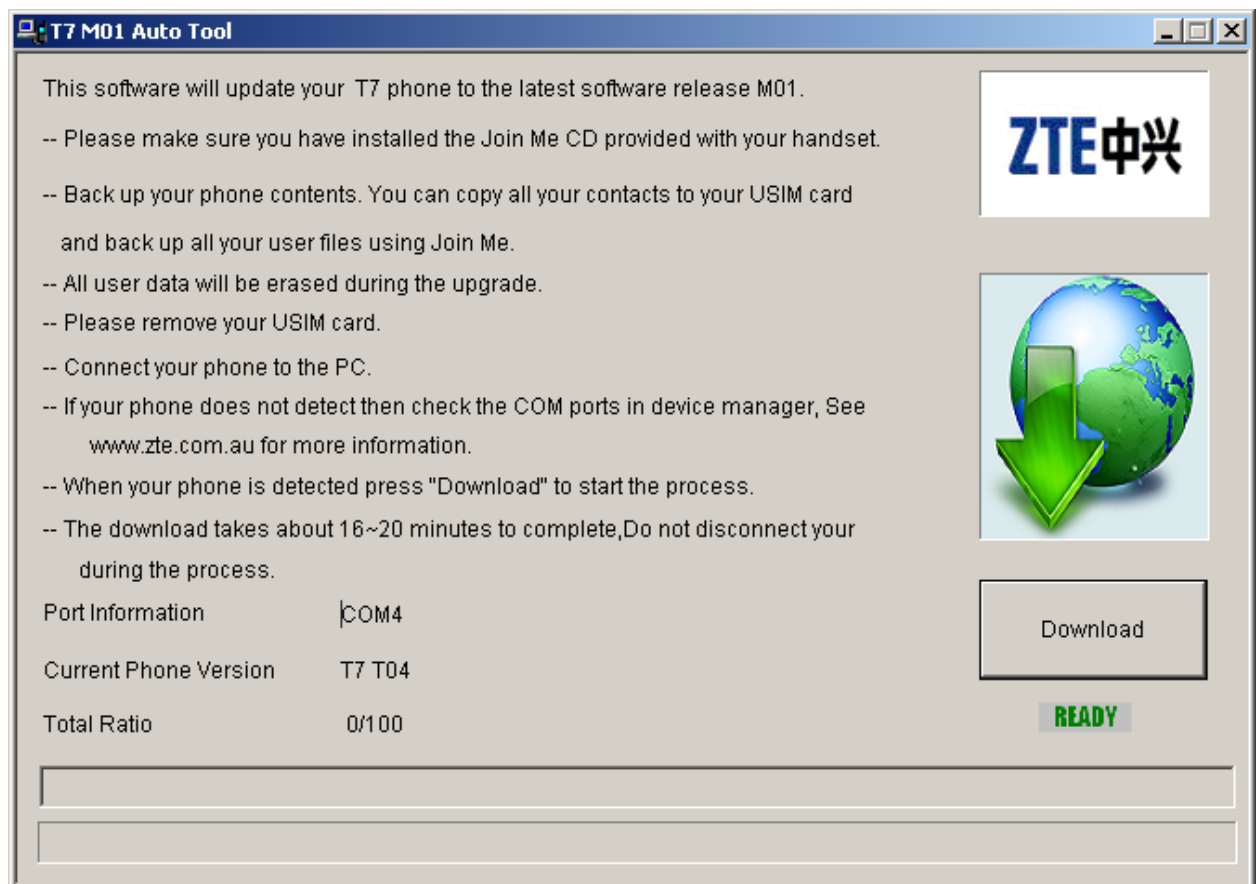
**Preliminary Actions**

- Make sure JoinMe is installed on your computer (available on the CD supplied with your handset and downloadable from our website)
- Download the T7 Software Tool from the ZTE website and save it on your computer.
- Extract the zip file to a new directory eg C:/Downloads. Make sure you extract the file and don't simply run it from the zip. This wont work.
- Plug in your handset and run the upgrade tool T7\_M01\_Autotool.exe

Please follow the instructions below as failure to do so could result in damage to your handset.

## T7 M01 Auto Tool Upgrade Instructions

1. Make sure you have installed the T7 Join Me CD provided with your handset.
2. You need to be logged on as the Administrator to perform the update
3. **DO NOT** use the program with **Windows 2000**. This version is only compatible with **XP Service Pack 2, SP3** and **Vista**.
4. Close all other PC applications and do not start any during the upgrade.
5. **Connect** your **handset** directly to the **PC** using the **USB lead provided**.  
Always use a direct port on the PC, **DO NOT** connect via a USB hub and do not insert or remove any other USB device during the upgrade process.
6. **Back up your phone contents using JoinMe** (see your User Guide). This will confirm that your handset drivers are installed correctly and will enable you to save all your current files and contacts prior to upgrading.
7. If you have more than 1 number stored against a Contact it is possible that the SIM card will only store the main number. **Use Join Me to make a total back-up of all your records.** (See your user guide for details)
8. **All user data (pictures, music, videos and contacts) will be erased**
9. **Please remove your USIM card and battery. – This is very important...**
10. Double click the 'T7\_M01\_Autootool.exe' file



11. Make sure 'Current Phone Version' shows your phone is detected.
12. **Press *Download*** to start. The download will be completed in about **15 mins**.

**Do not disconnect your phone during the process.**

**After the upgrade**

To get the best experience with your Car Kit we recommend that you Authorise the device to allow the car kit to connect every time by default without prompting you for a response. This will give a seamless automatic pairing experience.

1. Insert your handset into the cradle. The handset will automatically detect the car kit
2. “Search Bluetooth car kit nearby?” – Select Yes > Highlight ZTE BT2.x, Press OK
3. Enter the passcode 1234 > Press OK
4. “Paired successfully connect to it as default connection?” – Select Yes
5. Now go Menu > Tools > Bluetooth > My Devices > Options > Authorise Device
6. This will enable your handset to pair automatically without intervention every time you are in range of the car kit.