

**Important Notes**

- The update for your handset is the result of continuous development by ZTE and is designed to improve the performance of your device.
- When you perform the update, all your personal data such as contacts, messages, photos, audio and video files and any downloaded content will be erased.
- This software update is only suitable for the model specified and is not compatible with any other model.
- This software upgrade cannot be performed on PC's running Windows 2000 or Mac OS.
- This software tool only supports Windows 7, Vista and XP
- Even if the compatibility requirements mentioned in this document are fulfilled, some computers can not be used. Not all brands have been tested.
- ZTE take no responsibility for loss or damage if customers are unable to operate the software update tool, for failure of the handset or failure of the computer, loss of data or revenue.
- The Join ME software must be installed and be fully operational for the upgrade tool to function correctly.

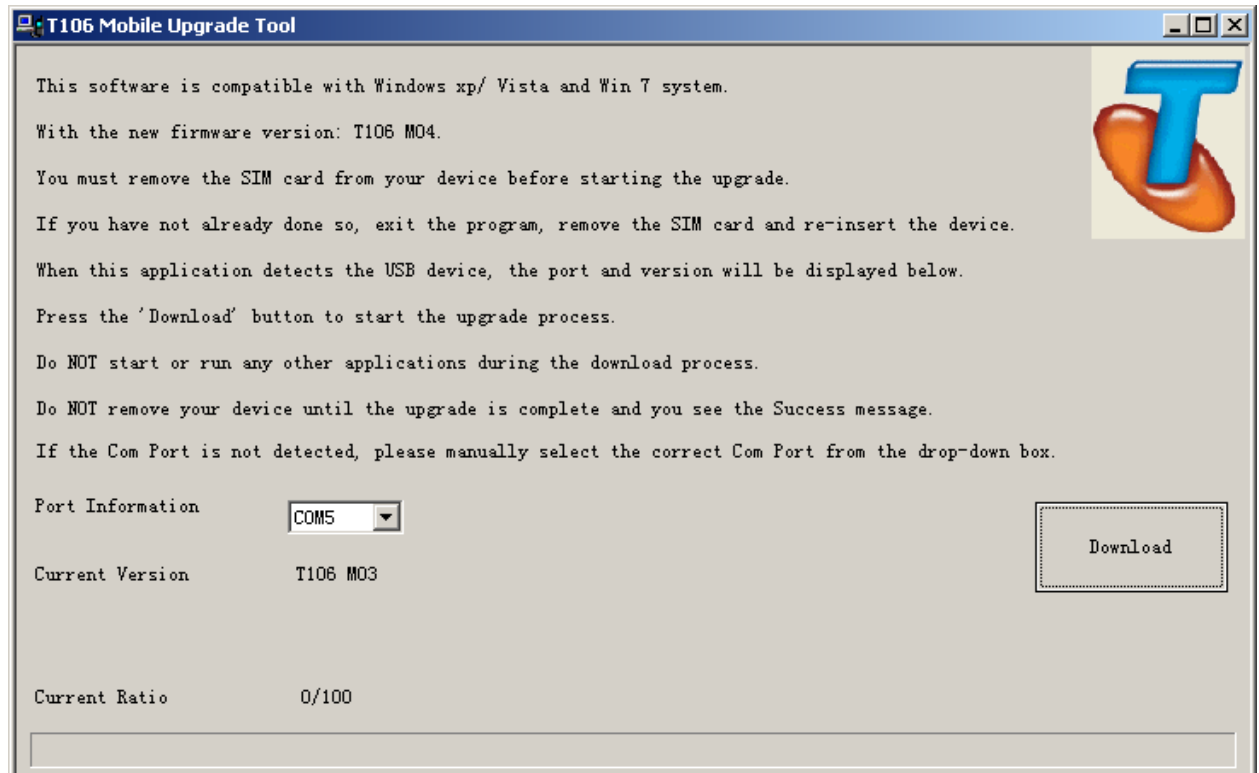
**Preliminary Actions**

- Make sure JoinMe is installed on your computer (available on the CD supplied with your handset and downloadable from our website)
- Download the Software Tool from the ZTE website and save it on your computer.
- Extract the zip file to a new directory eg C:/Downloads. Make sure you extract the file and don't simply run it from the zip. This wont work.
- Plug in your handset and run the upgrade tool

Please follow the instructions below as failure to do so could result in damage to your handset.

## Auto Tool Upgrade Instructions

1. Make sure you have installed the Join Me CD provided with your handset.
2. You need to be logged on as the Administrator to perform the update
3. **DO NOT** use the program with **Windows 2000**. This version is only compatible with **Windows 7, Vista** and **XP**
4. Close all other PC applications and do not start any during the upgrade.
5. **Connect** your **handset** directly to the **PC** using the **USB lead provided**.  
Always use a direct port on the PC, **DO NOT** connect via a USB hub and do not insert or remove any other USB device during the upgrade process.
6. **Back up your phone contents using JoinMe** (see your User Guide). This will confirm that your handset drivers are installed correctly and will enable you to save all your current files and contacts prior to upgrading.
7. **All user data (pictures, music, videos and contacts) will be erased**
8. Double click the T106\_Autotool.exe file to start the upgrade tool.



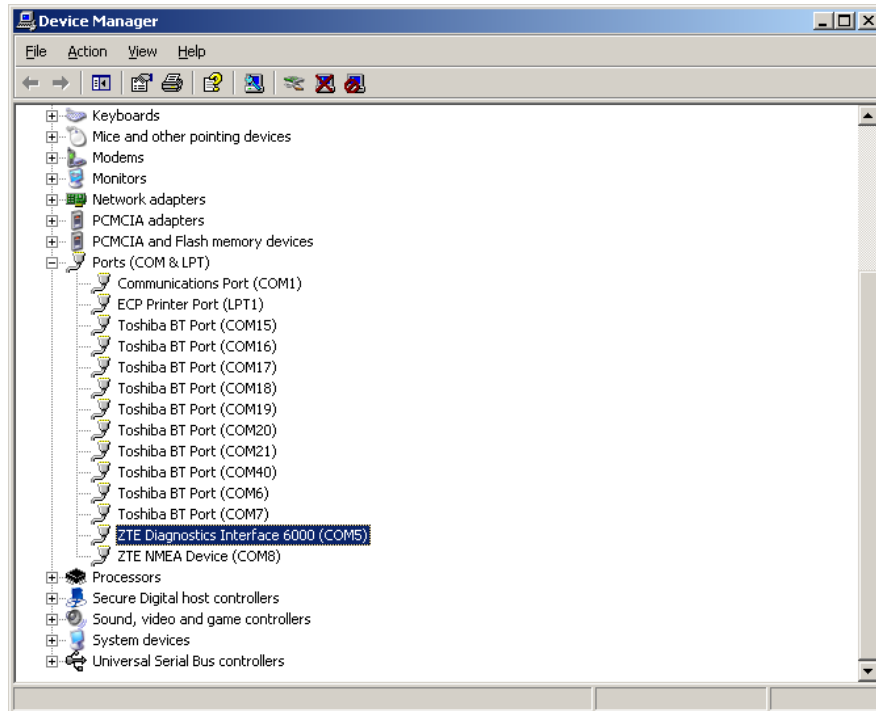
9. Make sure 'Current Phone Version' shows your phone is detected.
10. **Press *Download*** to start. The download will be completed in about **10 mins**.

**Do not disconnect your phone during the upgrade process.**

**Do not insert or remove any other USB device during the upgrade process.**

### What happens if the upgrade tool cannot find my device?

- Make sure you have installed Join Me, (Check...Start > Programs > Join Me)
- Remove the USB plug from your device and re-insert. Wait to see if the device is now detected.
- Manually select the port from the drop down box by reference to Device Manager
- Open Windows Device Manager (Start > Control Panel > System > Hardware)
- Note the COM port allocated to the ZTE Diagnostics Interface as shown below :



- Set the Diagnostics COM port number in the drop down box provided in the upgrade tool.
- Check the handset has powered up and is communicating with the PC by verifying the version number is displayed on the Upgrade Tool.
- Click on **Download** to start the upgrade process.
- Do not remove the device or close the tool until the upgrade process is complete.