



F252 Upgrade Instructions

Important Notes

- The upgrade for your F252 includes important maintenance fixes and software improvements.
- When you perform the upgrade all your personal data such as contacts, messages, photos, audio and video files and any downloaded content will be erased.
- Please use the Join Me PC suite to back up any content you wish to keep.
- You must have Join Me installed and operational to perform this upgrade.
- If you have not installed Join Me please do so before you start the upgrade.
- Install Join Me using the CD provided with your handset or follow the link on the downloads page for F252 Join Me.

ZTE accepts no liability or responsibility for lost data or failure of the upgrade process. If your phone fails to upgrade you will need to contact our warranty support line for further instructions.

Please follow the instructions carefully as failure to do so could result in damage to your handset.

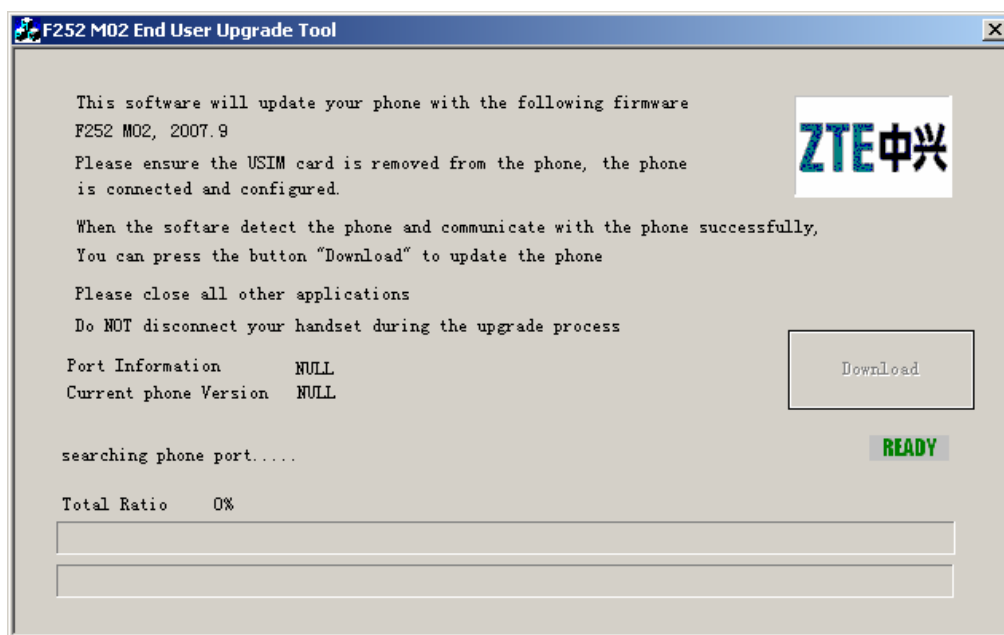
Cont...



F252 Upgrade Instructions

Auto Com Port Tool

1. Please make sure you have installed the Join Me CD provided with your handset.
2. You need to be logged on as the Administrator to perform the upgrade
3. Do **NOT** use the program with **Microsoft Vista or Windows 2000**. This version is only compatible with **XP Service Pack 2**.
4. Close all other PC applications.
5. **Back up your phone contents**. You can copy all your contacts to your USIM card and back up all your user files using Join Me, (see your User Guide for details).
6. If you have more than 1 number stored against a Contact it is possible that the SIM card will only store the main number. **Use Join Me to make a total back-up of all your records**. (See your user guide for details)
7. **All user data (pictures, music, videos and contacts) will be erased during the upgrade**.
8. Please **remove your USIM card** and connect your handset to the PC
9. Double click the 'F252 M02 End User DL.exe' file



10. The Upgrade Tool will automatically search for your phone.
11. Make sure your Current Phone Version shows your phone is detected
12. The current phone version will report F252 B09. The new version is F252 B12.
13. **Press Download** to start. The download will be completed in about **8 mins**.

Do not disconnect your phone during the process.

Do not start any other applications during the download process.