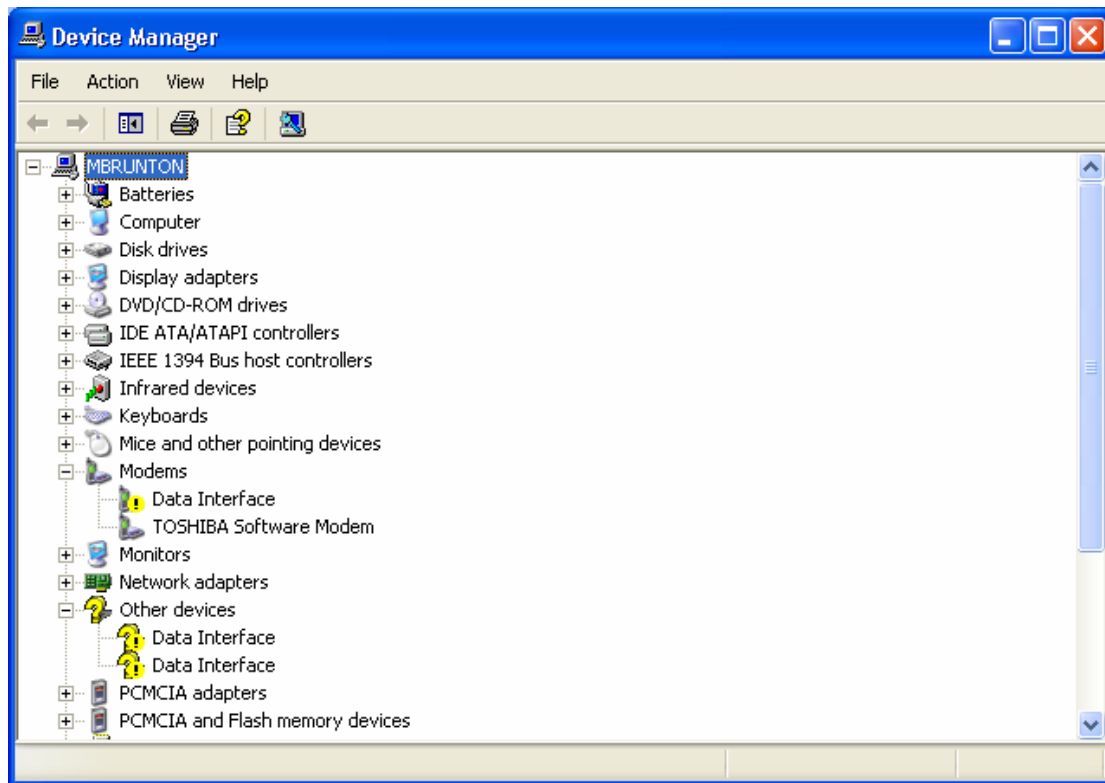


Device Manager Procedure to Update the Drivers

*** If the Drivers did not install correctly or if you plugged your phone into your PC before installing the CD then you need to manually update the drivers**

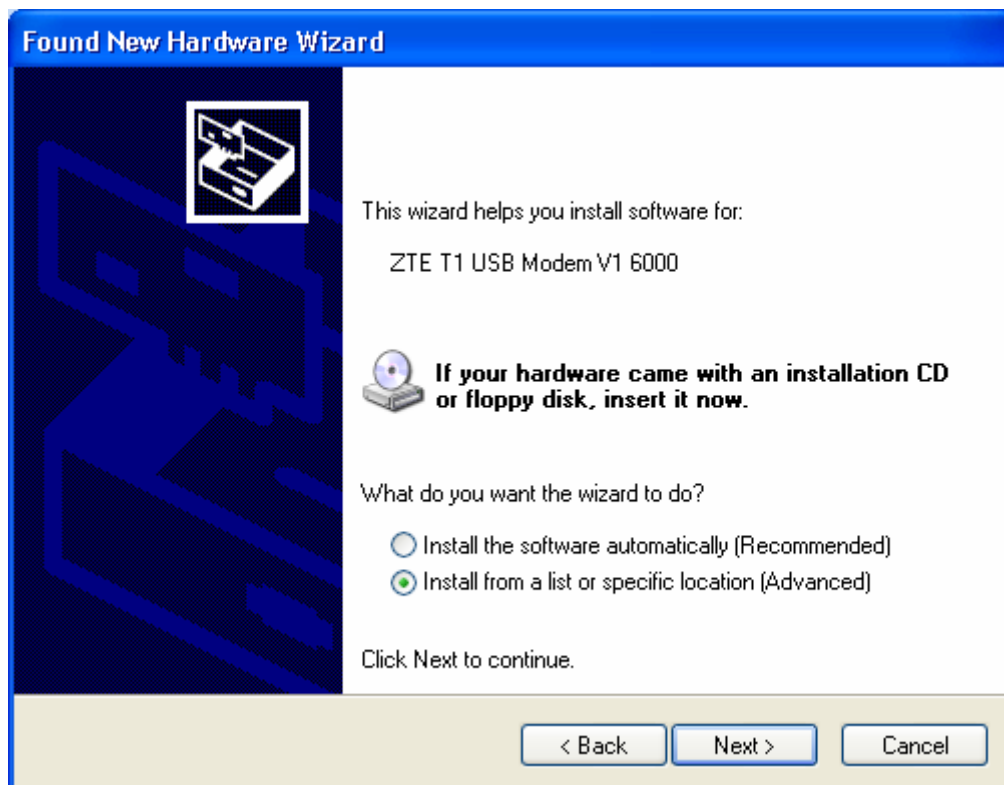
1. Complete steps 1-5 above.
2. Go to Device Manager (Control Panel, System, Hardware, Device Manager)
3. Look for yellow ! or ? marks, usually data interface, see 3 references below:



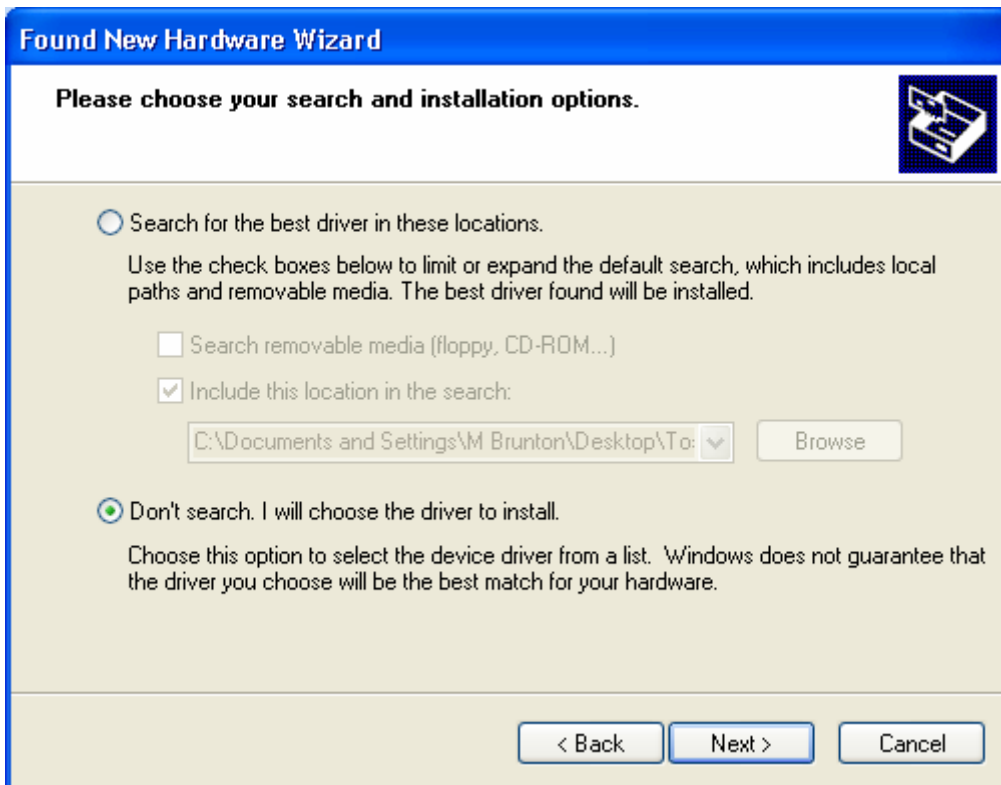
4. Even if you don't have yellow mark, updating the driver manually can fix some issues
5. Right-click on 'data interface' one at a time and choose 'Update Driver'
6. Windows will launch the Found New Hardware Wizard
7. Follow the steps exactly as below to complete the installation. Choose the lower options each time to force Windows to update the drivers.



Click Next

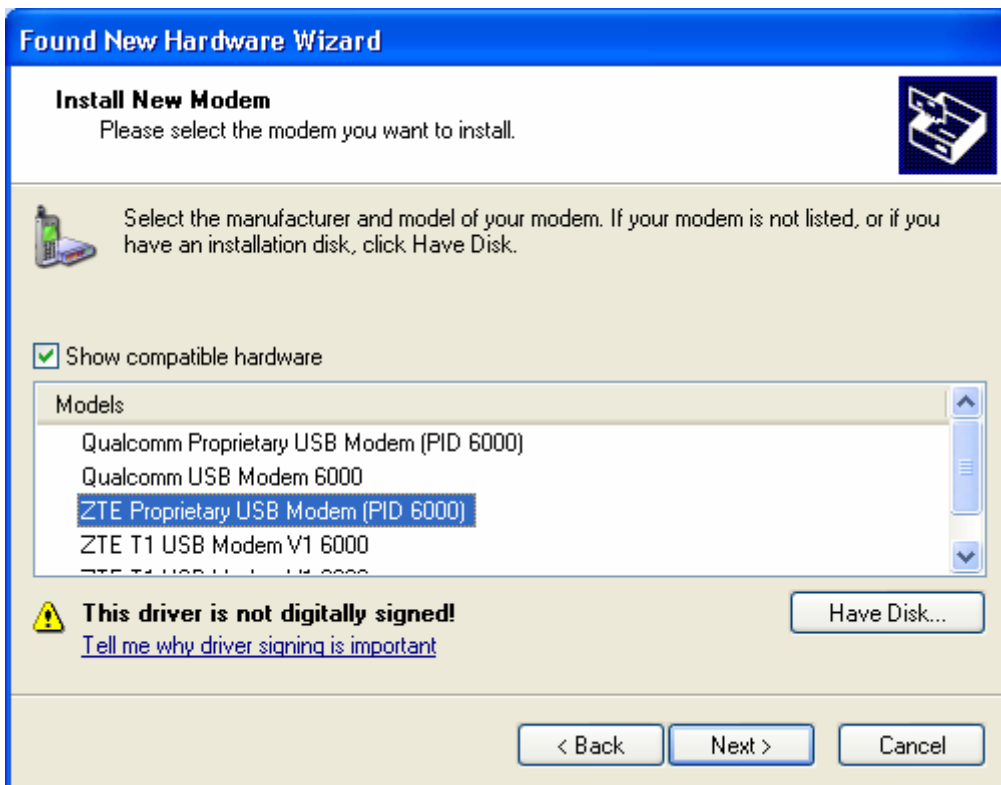


Click Next



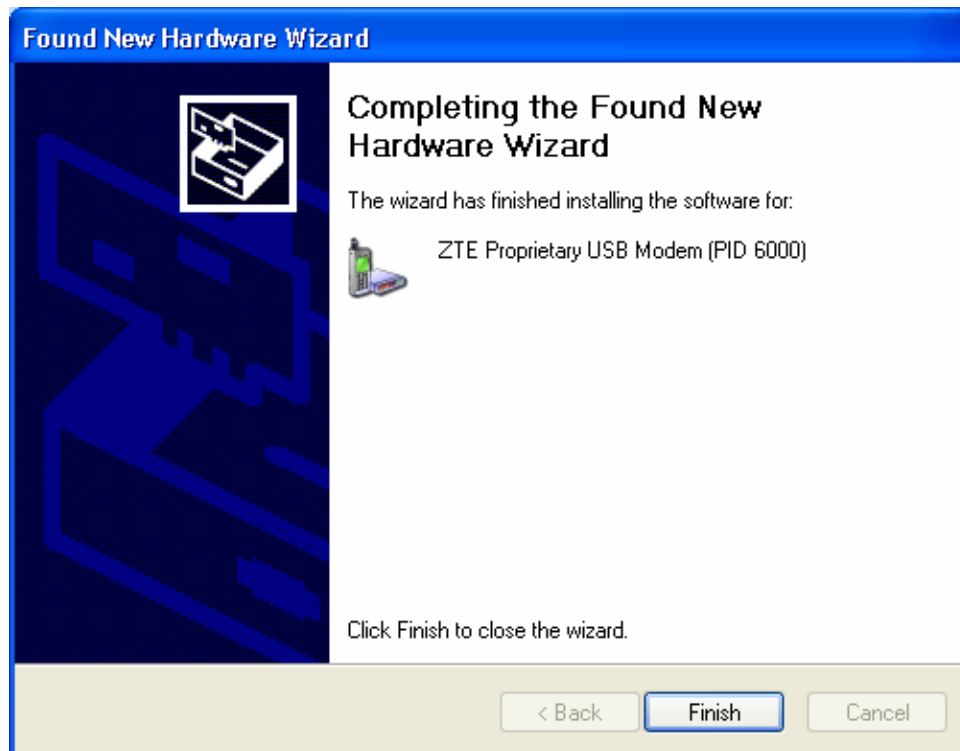
Click Next

(If a Window comes up asking you to choose the hardware device from the types listed, please select Modems and Click 'Next')

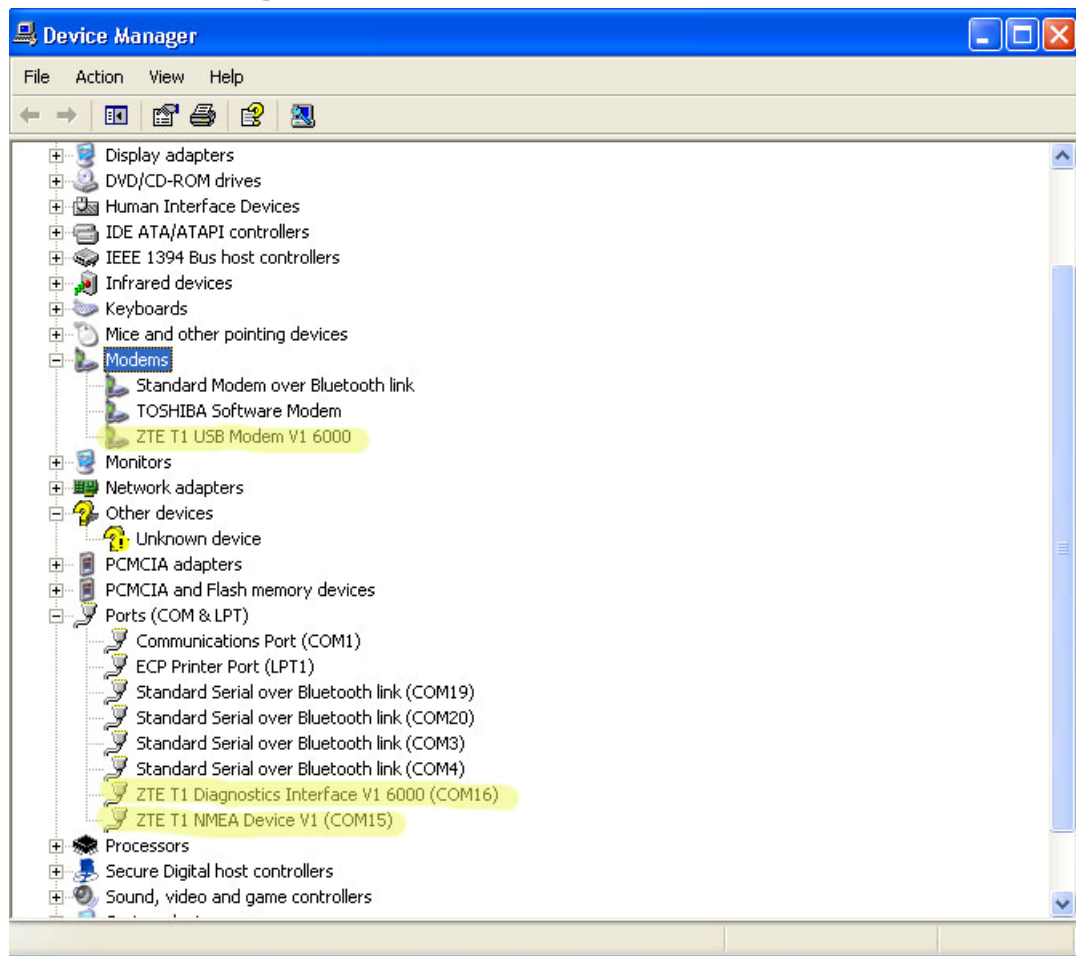


Select the driver that corresponds to ZTE. Usually this is highlighted by default. If there are more than one just choose the first one, it doesn't matter.

After installing the driver press the Finish button to return to Device Manager.
Repeat the process for each Data Interface so there are three drivers installed in total.



Device Manager with the correct drivers installed:



When installed correctly the three drivers will show as above whenever the phone is plugged in.